

# CWS Coil Winding Specialist

## Specification Sheets

**Customer :** \_\_\_\_\_ **Date:** Oct 2003  
**Part No. :** TS104-Y02 **Rev. :** \_\_\_\_\_

**Product :** TOP SWITCH TRANSFORMER

Item	Printed Specification	Proposed Specification

**Comment :**

---

---

---

---

**Remark :**

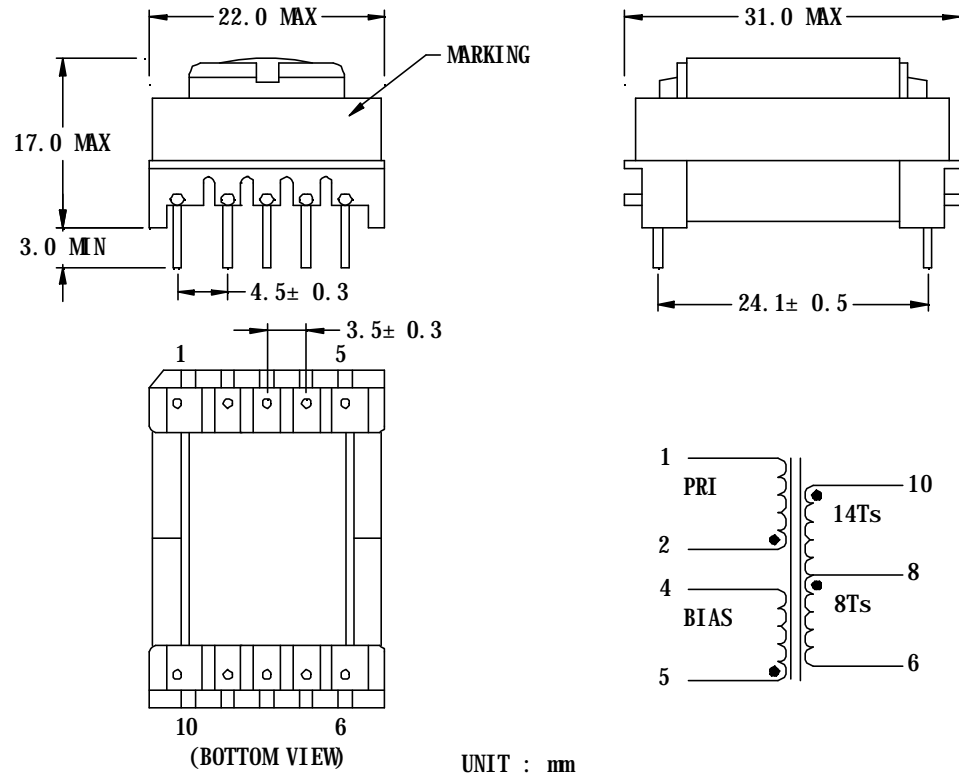
**Engineer:** \_\_\_\_\_

**Verified:** \_\_\_\_\_

**Approved by :** \_\_\_\_\_

# CWS Coil Winding Specialist

## Mechanical Dimension & Schematic



Customer :

Part No. : TS104-Y02

Rev.:

Sample No. :

# CWS Coil Winding Specialist

<b>Electrical Specification</b>												
<b>Remark :</b>												
Testing Item	Specification	Pin No.	Samples Tested Data									
			1	2	3	4	5	6	7	8	9	10
INDUCTANCE HP-4192A @100KHz, 0.1V	319.0 uH ±10%	L (2-1)	327	332	327	322	334	325	327	329	325	330
LEAKAGE IND. HP-4192A @100KHz, 0.1V	16.0 uH MAX PIN 6,8,10 SHORTED	LK (2-1)	13.8	13.7	13.9	14.0	13.7	14.1	14.1	13.6	14.2	13.9
HI-POT TEST GPT-615	1500VAC, 5mA, 1SEC	2,5 TO 10	OK	OK	OK	OK	OK	OK	OK	OK	OK	OK
<b>Customer :</b> C	<b>Part No. :</b> TS104-Y02		<b>Rev.:</b>					<b>Sample No. :</b>				